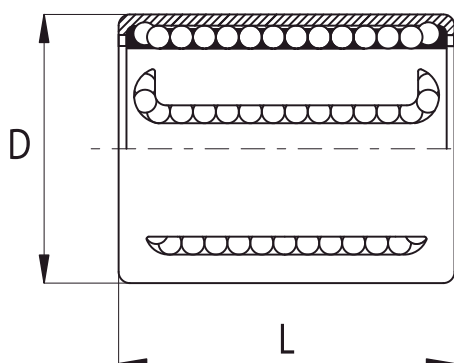


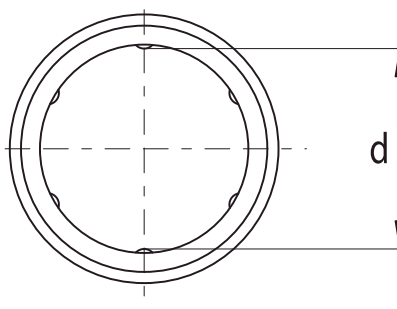
## KH

Gabbia in poliammide



## KH

Polyamide cage



TIPOLOGIA TYPE	PESO WEIGHT [kg]	d [mm]	D [mm]	L [mm]	CAPACITÀ DI CARICO LOAD CAPACITY RATING [N]	
					C	C <sub>0</sub>
<b>KH 06 22</b>	0.007	6	12	22	400	239
<b>KH 08 24</b>	0.013	8	15	24	435	280
<b>KH 10 26</b>	0.015	10	17	26	500	370
<b>KH 12 28</b>	0.019	12	19	28	620	510
<b>KH 14 28</b>	0.021	14	21	28	620	520
<b>KH 16 30</b>	0.028	16	24	30	800	620
<b>KH 20 30</b>	0.033	20	28	30	950	790
<b>KH 25 40</b>	0.066	25	35	40	1990	1670
<b>KH 30 50</b>	0.095	30	40	50	2800	2700
<b>KH 40 60</b>	0.182	40	52	60	4400	4450
<b>KH 50 70</b>	0.252	50	62	70	5500	6300

Sigla d'ordine:

KH - d - PP [tenute in entrambi i lati].

Sigla d'ordine:

KH - d [senza tenute].

Esempio:

KH 16 PP [modello KH, diametro albero 16 mm, tenute in entrambi i lati].

Specification number:

KH - d - PP [seals on both sides].

Specification number:

KH - d [without seals].

Example:

KH 16 PP [model KH, shaft diameter 16 mm, seals on both sides].