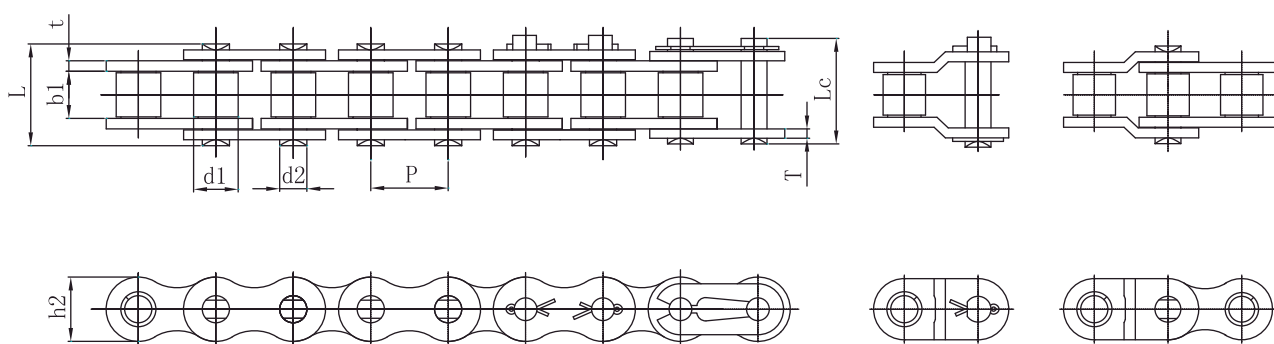


Cadena de rodillos simple / Single Strand Roller Chains



SERIE EUROPEA / EUROPEAN SERIES

Cadena ISO/DIN Chain No.	Paso Pitch	Diám. Rodillo Roller diameter	Ancho interno Width between inner plates	Diámetro del eje Pin diameter	Largo de la unión Pin length		Altura malla Inner plate depth	Grosor malla Plate thickness	Ancho entre ejes Transverse pitch	Carga mín. de rotura Ultimate tensile strength	Carga media de rotura Average tensile strength	Peso aprox. Weight per meter
	P	d ₁ max	b ₁ min	d ₂ max	L max	Lc max	h ₂ max	t/T	Pt	Q (ISO/DIN) min	Q ₀	q ≈
	mm	mm	mm	mm	mm	mm	mm	mm	mm	kN	kN	kg/m
05B-1	8.00	5.00	3.00	2.31	8.20	8.90	7.10	0.80	-	4.40/5.00	5.90	0.20
*06B-1	9.525	6.35	5.72	3.28	13.15	15.15	8.26	1.34	-	8.90/9.00	10.30	0.41
08B-1	12.70	8.51	7.75	4.45	16.95	19.05	11.81	1.60	-	17.80/18.00	19.60	0.69
10B-1	15.875	10.16	9.65	5.08	19.50	22.0	14.73	1.70	-	22.20/22.40	27.50	0.93
12B-1	19.05	12.07	11.68	5.72	22.50	25.10	16.13	1.85	-	28.90/29.00	33.30	1.15
16B-1	25.40	15.88	17.02	8.28	36.10	41.50	21.08	4.09/3.10	-	60.00	71.00	2.71
20B-1	31.75	19.05	19.58	10.19	42.40	47.60	26.42	4.60/3.60	-	95.00	101.80	3.70
24B-1	38.10	25.40	25.40	14.63	53.40	57.10	33.40	5.80/4.80	-	160.00	176.00	7.10
28B-1	44.45	27.94	30.99	15.90	65.10	69.40	37.08	7.50/6.50	-	200.00	215.60	8.50
32B-1	50.80	29.21	30.99	17.81	66.00	69.50	42.29	7.00/6.00	-	250.00	280.30	10.25
40B-1	63.50	39.37	38.10	22.89	82.60	91.30	52.96	8.50/7.50	-	355.00	392.00	16.35
48B-1	76.20	48.26	45.72	29.24	99.10	109.60	63.88	11.70/10.00	-	560.00	599.20	25.00
56B-1	88.90	53.98	53.34	34.32	114.6	123.0	77.80	13.5/12.0	-	850.0	940.0	35.78
64B-1	101.60	63.50	60.96	39.40	130.0	138.5	90.17	15.0/13.0	-	1120.0	1240.0	46.00
72B-1	114.30	72.39	68.58	44.48	147.4	156.4	103.60	17.0/15.0	-	1400.0	1550.0	60.80

*Disponible en malla plana

*Straight side plates